



AS THEY ROARED INTO BATTLE, ONLY ONE THING WAS MISSING...THE ENEMY.



An A-Team Production  
of a STEVEN SPIELBERG Film  
**DAN AYKROYD · NED BEATTY · JOHN BELUSHI · LORRAINE GARY · MURRAY HAMILTON**  
**CHRISTOPHER LEE · TIM MATHESON · TOSHIRO MIFUNE · WARREN OATES · ROBERT STACK · TREAT WILLIAMS**

A UNIVERSAL PICTURES and COLUMBIA PICTURES Presentation  
**1941** NANCY ALLEN · EDDIE DEEZEN · BOBBY DICICCO · DIANNE KAY · SLIM PICKENS · WENDIE JO SPERBER · LIONEL STANDER · Director of Photography WILLIAM A. FRAKER A.S.C.  
Screenplay by ROBERT ZEMECKIS & BOB GALE · Story by ROBERT ZEMECKIS & BOB GALE and JOHN MILIUS · Music by JOHN WILLIAMS · Produced by BUZZ FEITSHANS  
Executive Producer JOHN MILIUS · Directed by STEVEN SPIELBERG · PANAVISION® · Original Soundtrack Album on ARISTA Records and Tapes · Read the Ballantine Book  
Copyright ©1979 by UNIVERSAL CITY STUDIOS, INC. COLUMBIA PICTURES INDUSTRIES, INC. ALL RIGHTS RESERVED. **PG PARENTAL GUIDANCE SUGGESTED** SOME MATERIAL MAY NOT BE SUITABLE FOR CHILDREN

THEATRE

AD 406 B (Standard)  
4 Col x 100 Lines = 400 Lines  
4 Col x 7 1/8" = 28 1/2"



# ATTENTION EXHIBITORS

## Universal Showman Material

Please note that your free advertising accessories are now available through the supplier listed for your exchange area.

Mr. Donald L. Velde  
Donald L. Velde, Inc.  
311 West 43rd Street  
New York, New York 10036  
Phone (212) 581-6040

Atlanta  
Charlotte  
Cincinnati  
Indianapolis  
Jacksonville  
Washington

Chicago  
Milwaukee  
Cleveland  
Buffalo  
Pittsburgh  
Detroit

New York  
Albany  
New Haven  
Boston  
Philadelphia  
Minneapolis

Mr. Armand Atamian  
United Theatrical  
Amusement Inc.  
1658 Cordova Street  
Los Angeles, Calif. 90007  
Phone (213) 734-0510

Los Angeles  
Denver  
Salt Lake City  
San Francisco  
Seattle  
Portland  
Memphis

Dallas  
Oklahoma City  
Des Moines  
Omaha  
Kansas City  
St. Louis  
New Orleans

ONE SHEET • PRESSBOOK  
(4) 11 x 14 COLOR STILL SET  
(4) 8 x 10 COLOR STILL SET  
THEATRICAL TRAILER  
(Separate "G" and "R" When Required)

**1941**

In addition to the standard size ads in this pressbook a special kit of narrower column and wider column ads can be ordered from...

COOPERATIVE ADVERTISING DEPARTMENT  
UNIVERSAL CITY STUDIOS  
Universal City, Ca. 91608  
100 Universal City Plaza  
(213) 985-4321

AD 403 B (Standard)  
4 Col x 175 Lines = 700 Lines  
4 Col x 12½" = 50"

AD 502 B (Standard)  
5 Col x 160 Lines = 800 Lines  
5 Col x 11½" = 57½"

AD 601 B (Standard)  
6 Col x 167 Lines = 1002 Lines  
6 Col x 12" = 72"

**Please specify column width when ordering**

- narrow column 1-5/8 inches
- wide column 2-3/16 inches



**AS THEY ROARED INTO BATTLE, ONLY ONE THING WAS MISSING...THE ENEMY.**



An A-Team Production  
of a STEVEN SPIELBERG Film

**DAN AYKROYD · NED BEATTY · JOHN BELUSHI · LORRAINE GARY · MURRAY HAMILTON**

**CHRISTOPHER LEE · TIM MATHESON · TOSHIRO MIFUNE · WARREN OATES · ROBERT STACK · TREAT WILLIAMS**

A UNIVERSAL PICTURES and  
COLUMBIA PICTURES Presentation

**1941**

NANCY ALLEN · EDDIE DEEZEN · BOBBY DICICCO · DIANNE KAY · SLIM PICKENS · WENDIE JO SPERBER · LIONEL STANDER · Director of Photography WILLIAM A. FRAKER, A.S.C.  
Screenplay by ROBERT ZEMECKIS & BOB GALE · Story by ROBERT ZEMECKIS & BOB GALE and JOHN MILIUS · Music by JOHN WILLIAMS · Produced by BUZZ FEITSHANS

Executive Producer JOHN MILIUS · Directed by STEVEN SPIELBERG · PANAVISION®

Original Soundtrack Album on ARISTA Records and Tapes.

Read the Ballantine Book

**PG PARENTAL GUIDANCE SUGGESTED**  
SOME MATERIAL MAY NOT BE SUITABLE FOR CHILDREN

Copyright ©1979 by UNIVERSAL CITY STUDIOS, INC. COLUMBIA PICTURES INDUSTRIES, INC. ALL RIGHTS RESERVED.

THEATRE

AD 504 B (Standard) = 600 Lines  
5 Col x 120 Lines = 42½"  
5 Col x 8½" = 42½"



**AS THEY ROARED INTO BATTLE, ONLY ONE THING WAS MISSING...THE ENEMY.**



An A-Team Production of a STEVEN SPIELBERG Film

**DAN AYKROYD · NED BEATTY · JOHN BELUSHI · LORRAINE GARY  
MURRAY HAMILTON · CHRISTOPHER LEE · TIM MATHESON · TOSHIRO MIFUNE  
WARREN OATES · ROBERT STACK · TREAT WILLIAMS**

A UNIVERSAL PICTURES and COLUMBIA PICTURES Presentation

**1941**

**NANCY ALLEN · EDDIE DEEZEN · BOBBY DICICCO · DIANNE KAY · SLIM PICKENS · WENDIE JO SPERBER · LIONEL STANDER**

Director of Photography WILLIAM A. FRAKER, A.S.C. · Screenplay by ROBERT ZEMECKIS & BOB GALE · Story by ROBERT ZEMECKIS & BOB GALE and JOHN MILIUS · Music by JOHN WILLIAMS · Produced by BUZZ FEITSHANS · Executive Producer JOHN MILIUS · Directed by STEVEN SPIELBERG

PANAVISION®

Original Soundtrack Album on ARISTA Records and Tapes

Read the Ballantine Book

PG PARENTAL GUIDANCE SUGGESTED  
SOME MATERIAL MAY NOT BE SUITABLE FOR CHILDREN

Copyright ©1979 by UNIVERSAL CITY STUDIOS, INC. · COLUMBIA PICTURES INDUSTRIES, INC.  
ALL RIGHTS RESERVED

THEATRE

AD 405 B (Standard)  
4 Col x 125 Lines = 500 Lines  
4 Col x 9" = 36"





AD 102 A (Standard)  
 1 Col x 14 Lines = 14 Lines  
 1 Col x 1" = 1"

**AS THEY ROARED INTO BATTLE, ONLY ONE THING WAS MISSING...THE ENEMY.**



AD 206 A (Standard)  
 2 Col x 14 Lines = 28 Lines  
 2 Col x 1" = 2"

An A Team Production of a STEVEN SPIELBERG Film  
**DAN AYKROYD · NED BEATTY · JOHN BELUSHI · LORRAINE GARY**  
**MURRAY HAMILTON · CHRISTOPHER LEE · TIM MATHESON · TOSHIRO MIFUNE**  
**WARREN OATES · ROBERT STACK · TREAT WILLIAMS**  
 A UNIVERSAL PICTURES and COLUMBIA PICTURES Presentation

**1941**

NANCY ALLEN · EDDIE DEEZEN · BOBBY DICICCO · DIANNE KAY · SLIM PICKENS · WENDIE JO SPERBER · LIONEL STANDER  
 Director of Photography WILLIAM A. FRAKER, ASC · Screenplay by ROBERT ZEMECKIS & BOB GALE · Story by ROBERT ZEMECKIS & BOB GALE and JOHN MILIUS · Music by JOHN WILLIAMS · Produced by BUZZ FEITSHANS · Executive Producer JOHN MILIUS · Directed by STEVEN SPIELBERG

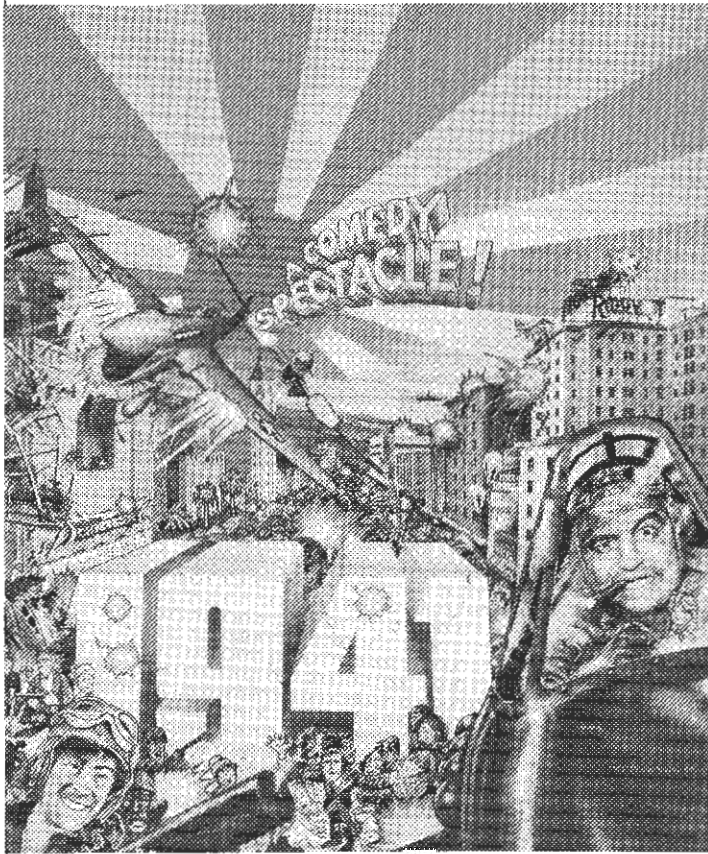
PANAVISION® Original Soundtrack Album on ARISTA Records and Tapes Read the Dellantine Book **PG PARENTAL GUIDANCE SUGGESTED**  
COPYRIGHT © 1979 BY UNIVERSAL CITY STUDIOS, INC. COLUMBIA PICTURES INDUSTRIES, INC. ALL RIGHTS RESERVED. SOME MATERIAL MAY NOT BE SUITABLE FOR CHILDREN.

THEATRE

AD 304 B (Standard)  
 3 Col x 100 Lines = 300 Lines  
 3 Col x 7 1/8" = 21 3/8"



**AS THEY ROARED INTO BATTLE, ONLY  
ONE THING WAS MISSING...THE ENEMY.**



An A Team Production of a STEVEN SPIELBERG Film  
**DAN AYKROYD · NEO BEATTY · JOHN BELUSHI · LORRAINE GARY**  
**MURRAY HAMILTON · CHRISTOPHER LEE · TIM MATHESON · TOSHIRO MIFUNE**  
**WARREN DATES · ROBERT STACK · TREAT WILLIAMS**  
 A UNIVERSAL PICTURES and COLUMBIA PICTURES Presentation

**1941**

Director of Photography WILLIAM A. FRAKER, A.S.C. · Screenplay by ROBERT ZEMECKIS & GORD GALE · Story by ROBERT ZEMECKIS & GORD GALE and JOHN MILIUS · Music by JOHN WILLIAMS · Produced by BRUZZ FETTSCHANS · Executive Producer JOHN MILIUS · Directed by STEVEN SPIELBERG  
 PANAVISION® Read the Ballantine Book PG  
Original Soundtrack Album on ARISTA Records and Tapes  
Copyright © 1978 by UNIVERSAL CITY STUDIOS, INC. COLUMBIA PICTURES INDUSTRIES, INC. ALL RIGHTS RESERVED

THEATRE

AD 202 B (Standard)  
 2 Col x 100 Lines = 200 Lines  
 2 Col x 7 1/8" = 14 1/4"



**1941**

PANAVISION® Read the Ballantine Book PG  
Original Soundtrack Album on ARISTA Records and Tapes  
Copyright © 1978 by UNIVERSAL CITY STUDIOS, INC. COLUMBIA PICTURES INDUSTRIES, INC. ALL RIGHTS RESERVED

AD 105 A (Standard)  
 1 Col x 75 Lines = 75 Lines  
 1 Col x 5 3/8" = 5 3/8"



A STEVEN SPIELBERG FILM

**1941**

PANAVISION® Read the Ballantine Book PG  
Original Soundtrack Album on ARISTA Records and Tapes  
Copyright © 1978 by UNIVERSAL CITY STUDIOS, INC. COLUMBIA PICTURES INDUSTRIES, INC. ALL RIGHTS RESERVED

AD 104 A (Standard)  
 1 Col x 50 Lines = 50 Lines  
 1 Col x 3 5/8" = 3 5/8"

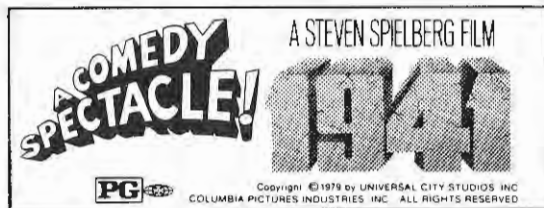


AD 204 A (Standard)  
 2 Col x 37 Lines = 74 Lines  
 2 Col x 2 5/8" = 5 1/4"



AD 203 A (Standard)  
 2 Col x 49 Lines = 98 Lines  
 2 Col x 3 1/2" = 7"





MINI DIRECTORY ADS





# CAST

## STARRING

DAN AYKROYD ..... Sergeant Tree  
 NED BEATTY ..... Ward Douglas  
 JOHN BELUSHI ..... Wild Bill Kelso  
 LORRAINE GARY ..... Joan Douglas  
 MURRAY HAMILTON ..... Claude  
 CHRISTOPHER LEE ..... Von Kleinschmidt  
 TIM MATHESON ..... Birkhead  
 TOSHIRO MIFUNE ..... Commander Mitamura  
 WARREN OATES ..... Maddox  
 ROBERT STACK ..... General Stilwell  
 TREAT WILLIAMS ..... Sitarski

## CO-STARRING

NANCY ALLEN ..... Donna  
 LUCILLE BENSEN ..... Gas Mama  
 JORDAN BRIAN ..... Macey  
 JOHN CANDY ..... Foley  
 ELISHA COOK ..... the Patron  
 EDDIE DEEZEN ..... Herbie  
 BOBBY DICICCO ..... Wally  
 DIANNE KAY ..... Betty  
 PERRY LANG ..... Dennis  
 PATTI LUPONE ..... Lydia Hedberg  
 PENNY MARSHALL ..... Miss Fitzroy  
 J. PATRICK McNAMARA ..... DuBois  
 FRANK McRAE ..... Ogden Johnson Jones  
 STEVEN MOND ..... Gus  
 SLIM PICKENS ..... Hollis Wood  
 WENDIE JO SPERBER ..... Maxine  
 LIONEL STANDER ..... Sciofi  
 DUB TAYLOR ..... Mr. Malcomb  
 IGNATIUS WOLFGTON ..... Meyer Mishkin  
 CHRISTIAN ZIKA ..... Stevie  
 with  
 JOSEPH P. FLAHERTY ..... U.S.O. M.C.

## SPECIAL APPEARANCES BY:

DAVID LANDER ..... Joe  
 MICHAEL McKEAN ..... Willy

# CREDITS

UNIVERSAL PICTURES and COLUMBIA PICTURES Present an A-TEAM PRODUCTION of A STEVEN SPIELBERG FILM, "1941," Directed by STEVEN SPIELBERG; Screenplay by ROBERT ZEMECKIS & BOB GALE; Story by ROBERT ZEMECKIS & BOB GALE and JOHN MILIUS; Produced by BUZZ FEITSHANS; Director of Photography, WILLIAM A. FRAKER, A.S.C.; Production Designer, DEAN EDWARD MITZNER; Edited by MICHAEL KAHN, A.C.E.; Music by JOHN WILLIAMS; Associate Producer, MICHAEL KAHN; Associate Producer, JANET HEALY; Executive In Charge of Production, JOHN WILSON; Unit Production Managers, CHUCK MYERS, HERB WILLIS; First Assistant Directors, JERRY ZIESMER, STEVE PERRY; Second Assistant Director, CHRIS SOLDI; Special Effects Created by A.D. FLOWERS; Miniature Supervisor, GREGORY JEIN; Costumes by, DEBORAH NADOOLMAN; Art Director, WILLIAM F. O'BRIEN; Matte Paintings by MATTHEW YURICICH; Assistant Film Editor, DANIEL TODD CAHN; Visual Effects Supervisor, LARRY ROBINSON; Optical Consultant, L. B. ABBOTT, A.S.C.; Blue Screen Consultant, FRANK VAN DER VEER; Miniature Lighting Designed by ROBIN LEYDEN; Casting by SALLY DENNISON; Production Illustrator, GEORGE JENSEN; Set Decoration, JOHN AUSTIN; Set Designers, HENRY ALBERTI, DAN GLUCK, GREG PICKRELL, CARLTON REYNOLDS, VIRGINIA L. RANDOLPH, WILLIAM SKINNER; Production Sound Mixer, GENE S. CANTAMESSA; Music Editor, KEN WANNBERG; Music Scoring Mixer, JOHN NEAL; Orchestra Manager, MARION KLEIN; Orchestrations, HERBERT SPENCER; Supervising Sound Effects Editor, FRED J. BROWN, M.P.S.E.; Filmed in PANAVISION; Prints by METROCOLOR.

### "DOWN BY THE OHIO"

Performed by The Andrew Sisters  
 Courtesy of MCA Records, Inc.

### "DADDY"

Performed by The Andrew Sisters  
 Courtesy of MCA Records, Inc.

Optical Effects ..... VAN DER VEER PHOTO EFFECTS  
 Sound ..... TODD-A-O  
 Titles by ..... DENIS HOFMAN-FREEZE FRAME

Louma Crane Courtesy of Filmtrucks, Inc., New York

Film Excerpt from "DUMBO" © 1941 Walt Disney Productions

MPAA Rating: PG

FILM RATIO: 2.35 x 1

All advertising in this press book, as well as all other advertising and publicity materials referred to herein, has been approved under the Standards for Advertising of the Code of Self Regulation of the Motion Picture Association of America. All inquiries on this procedure may be addressed to

DIRECTOR OF THE CODE OF ADVERTISING  
 MOTION PICTURE ASSOCIATION OF AMERICA  
 8480 BEVERLY BOULEVARD, HOLLYWOOD, CA. 90048



MOTION PICTURE  
 ASSOCIATION OF AMERICA



**STEVEN SPIELBERG'S "1941" — AN EPIC COMEDY BENDS HISTORY LIKE A PRETZEL**

Following the international success of "Jaws" and "Close Encounters Of The Third Kind," which rank among the most popular films of all time, Steven Spielberg decided that his next project would be a comedy. The result is "1941," which opens . . . . . at the . . . . . Theatre, a large-scale production set in Los Angeles during the panic-stricken days following the attack on Pearl Harbor, when most of the population of Southern California believed that a Japanese invasion could come at any time.

Specifically, "1941" is a zany account of just 24 hours — the day and night of December 13th, just six days after Pearl Harbor, when the hysteria, paranoia and fears of the times were climaxed by a mysterious 14-hour blackout that threw Los Angeles into a state of pandemonium. Cars driving without headlights piled into one another on the freeways. Normally sane people ran through the streets, breaking store windows to put out the lights. Rumors of Japanese troops landing on the coast swept through the city.

"This is a comedy, not a war picture," explains the brilliant young filmmaker. "We've bent history like a pretzel and filmed 'The Great Los Angeles Air Raid' as it might have happened."

Several other bizarre incidents of the period add to the confusion and hilarity of the story. "The Zoot Suit Riots," a series of street fights between servicemen and the colorfully dressed Pachucos give an extra dimension of humor to the film's biggest scene — a riot on Hollywood Boulevard during the blackout. And the real-life submarine shelling of a California oilfield that resulted in less than \$500 worth of damages is dramatized in "1941" as an attack on the Pacific Ocean Park pier, a somewhat more amusing target.

Starring in Spielberg's "action misadventure," as he calls it, are

Dan Aykroyd, Ned Beatty, John Belushi, Lorraine Gary, Murray Hamilton, Christopher Lee, Tim Matheson, Toshiro Mifune, Warren Oates, Robert Stack and Treat Williams. In addition to a big co-starring and featured cast, literally hundreds of extras and stunt people were used to dramatize the sweeping panorama of this one frantic day and night of hysteria.

A carefully researched replica of Hollywood Boulevard during the 1941 Christmas season, the film's largest interior set, was recreated at the Burbank Studios for the riot scenes. Other important scenes were filmed at a Long Beach airport, with more than a dozen vintage World War II airplanes; inside a former theater converted into the war-time Hollywood USO, where more than 100 dancers staged an electrifying Jitterbug contest; at MGM's huge aquatic Stage 30 where Esther Williams used to prance through her swim ballets and the elegant tapestried interior of the Los Angeles Theatre, the city's most ornate movie palace when it was built in 1928. On an oceanside cliff in Malibu, the filmmakers also constructed a two-story colonial house which they later demolished for one spectacular climaxing scene of the film.

In addition to the actual locations and interior sets, two of the largest

miniatures ever built for a film were constructed in exacting detail to represent Hollywood Boulevard and the Ocean Park Amusement pier. Most of the special effects, however, were created in the old-fashioned way — by performers doing their thing in front of the camera rather than with miracles of action being created in optical laboratories. More than 50 trained stunt people were employed to enact the non-stop stream of action and sight gags that keep the manic narrative of "1941" rolling along.

Technical innovations include the most extensive use of the Louma Crane, a modular, hand-portable camera platform that gives unprecedented flexibility and kinetic energy to camera movements. The inventors of the ingenious device, Jean-Marie Lavalou and Alain Maseron, were present during the use of their invention in the submarine sequences of "1941."

A Steven Spielberg Film, "1941" is A Universal Pictures and Columbia Pictures presentation of An A-Team Production. Dan Aykroyd, Ned Beatty, John Belushi, Lorraine Gary, Murray Hamilton, Christopher Lee, Penny Marshall, Tim Matheson, Toshiro Mifune, Warren Oates, Robert Stack and Treat Williams star in the film, which was directed by Steven Spielberg. Produced by Buzz Feitshans, with John Milius as Executive Producer, the screenplay is by Robert Zemeckis & Bob Gale, and the story is by Robert Zemeckis & Bob Gale and John Milius.

# # #

**"1941" — A CELEBRATION OF COMIC PARANOIA**

"An action misadventure" is the way director Steven Spielberg describes his first comedy "1941."

For his first shot at film humor, Spielberg chose a large-scale story

about the mass hysteria that gripped Los Angeles following the attack on Pearl Harbor.

"I wanted comedy that was visual and physical, not intellectual or soft-spoken," says the young filmmaker. He describes "1941" as "loud, vociferous, bombastic" and "crazo." The film offers an extraordinary parade of stunts, sight gags, and pyrotechnics, presented with a "high energy level and a lack of inhibition."

"My job," adds Spielberg, "was to mellow the craziness, to instill some realism into the frenzy."

To help him create his first comedy, Spielberg enlisted some top laugh-getters, including John Belushi and Dan Aykroyd of "Saturday Night Live" fame and Tim Matheson of "National Lampoon's Animal House." "1941" also gives comedy roles to versatile actors such as Ned Beatty, Lorraine Gary, Murray Hamilton, Christopher Lee, Penny Marshall, Toshiro Mifune, Warren Oates, Robert Stack, and Treat Williams.

Why the wartime milieu?

"The more dangerous and serious the conflict, the funnier the comedy," says Spielberg, who got explosive laughs with the comic relief in "Jaws" and "Close Encounters Of The Third Kind."

"There is great humor in hysteria," says the young filmmaker who could have continued one of Hollywood's most remarkable success stories by simply making derivative variations of his previous smash hits.

"I need new material to keep my interest alive," says Spielberg. "And I love gambling. There's no point in making a film without risks."

"1941," a mammoth joint venture of Universal and Columbia, took seven months to make and involved 45 locations (as compared to three on "Jaws"). It was filmed en-

tirely in Los Angeles, giving Spielberg the pleasure of working close to home for the first time.

There were no sharks to contend with, and no Mother Ship to create with intricate laboratory effects. But there were dozens of screwball characters, an 80-foot submarine, a plane crash, a full-scale riot on Hollywood Blvd., a love scene in a plane under attack, a frantic jitterbug contest, a runaway ferris wheel, an airport thrown into panic by an escaped bomb, and the demolition of a two-story home.

It's what Spielberg calls "a celebration of paranoia. This is the film that proves hyper-tension can be fun."

A Steven Spielberg Film, "1941" is A Universal Pictures and Columbia Pictures presentation of An A-Team Production. Dan Aykroyd, Ned Beatty, John Belushi, Lorraine Gary, Murray Hamilton, Christopher Lee, Penny Marshall, Tim Matheson, Toshiro Mifune, Warren Oates, Robert Stack and Treat Williams star in the film, which was directed by Steven Spielberg. Produced by Buzz Feitshans, with John Milius as Executive Producer, the screenplay is by Robert Zemeckis & Bob Gale, and the story is by Robert Zemeckis & Bob Gale and John Milius.

# # #

**JOHN BELUSHI STARS AS 'WILD BILL KELSO'**

"A one-man air force" is the way John Belushi describes his role in Steven Spielberg's comedy adventure "1941." Belushi stars as "Wild Bill Kelso," a gung-ho P-40 pilot who leaps into action during the invasion scare after the Japanese attack on Pearl Harbor. He's determined to be the first pilot to shoot down an enemy plane.

"He's a man with a mission who goes totally nuts," says Belushi,



who has proven his ability to project dedicated insanity during four seasons of the popular "Saturday Night Live" TV series and as the #1 animal in "National Lampoon's Animal House."

Belushi describes his new character as "supremely brave. When the crisis hits, he doesn't hesitate or stop to think. He sets out to do something. He motivates."

Among the things "Wild Bill" does on the frantic day of December 13th is to commandeer a P-40 Fighter plane and wage his own ferocious attack on the encroaching enemy. His one-man war extends from a Japanese submarine at sea to crowded Hollywood Boulevard.

In this role Belushi chomps a cigar and sports an airman's leather jacket with eight-ball decal and flowing white silk scarf.

Belushi stars in "1941" with fellow "Not Ready For Prime Time Player" Dan Aykroyd, and "Animal House" brother Tim Matheson, as well as Ned Beatty, Lorraine Gary, Murray Hamilton, one-time "Saturday Night" host Christopher Lee, Toshiro Mifune (whose samurai films inspired Belushi's samurai skits), Warren Oates, Robert Stack, and Treat Williams.

At the peak of his new stardom, Belushi welcomed the chance to work with director Steven Spielberg ("Jaws," "Close Encounters").

Acting for Steven, says Belushi, "is like working with an old friend from high school."

A Steven Spielberg Film, "1941" is A Universal Pictures and Columbia Pictures presentation of An A-Team Production. Dan Aykroyd, Ned Beatty, John Belushi, Lorraine Gary, Murray Hamilton, Christopher Lee, Penny Marshall, Tim Matheson, Toshiro Mifune, Warren Oates, Robert Stack and Treat Williams star in the film, which was directed by Steven Spielberg. Produced by Buzz Feitshans, with John Milius as Executive Producer, the

screenplay is by Robert Zemeckis & Bob Gale, and the story is by Robert Zemeckis & Bob Gale and John Milius.

# # #

### A 'PRIME TIME' STAR TAKES A MOVIE BOW

Dan Aykroyd may not be "Ready for Prime Time," but he's ready for the movies.

The flagrantly talented charter member of "Saturday Night Live's" "Not Ready for Prime Time Players" makes his American feature film debut in Steven Spielberg's comedy adventure "1941."

Aykroyd stars as Sgt. Tree, a super-patriotic soldier who hijacks a tank to quell a riot on crowded Hollywood Boulevard during the 14-hour blackout that hits Los Angeles on December 13th, 1941.

Aykroyd's gallery of comic characterizations on "Saturday Night Live" prompted a number of earlier movie offers, but he chose Spielberg's wacky re-creation of "The Great Los Angeles Air Raid" for his big-screen bow.

"I talked my way into this one," admits Dan. "I saw 'The Bear Man' (John Belushi) reading his script, and I asked to have a look. I read the speech Sergeant Tree delivers to the mob on Hollywood Blvd. and I said 'Golly, I'd love to play this guy.' So I phoned and asked to be cast in the movie."

Aykroyd describes the character as "An overly-enthusiastic, motor pool mechanic with a profound knowledge of the war and the events leading up to it. He's anxious to be part of this Great Adventure and tries to transfer some of his spirit to his men and the citizenry."

Other things that appealed to Aykroyd about the film were "lots of hardware and great toys" such as the M3 tank ("Lulubelle") he commands, a Japanese submarine commanded by Toshiro Mifune, and

a recreation of the Jitterbug-jumping Hollywood USO.

Also, adds Dan, "I like films with short titles. And I prefer numbers to letters. Some of my favorite movies are 'THX 1138,' '1900,' and 'One Two Three.' '1941' certainly fits into that great cinematic tradition."

On a more serious level, Aykroyd admits that he welcomed the chance to work with Steven Spielberg, director of "Jaws" and "Close Encounters Of The Third Kind."

"It's great to work with a director of his talent who's still young, not a crotchety dictatorial type," says Dan. "Steven is a visionary. He takes on a lot, and he pulls it through."

Following "1941," Aykroyd starred with pal John Belushi in "The Blues Brothers," directed by John Landis from an original script by Aykroyd and Landis.

A Steven Spielberg Film, "1941" is A Universal Pictures and Columbia Pictures presentation of An A-Team Production. Dan Aykroyd, Ned Beatty, John Belushi, Lorraine Gary, Murray Hamilton, Christopher Lee, Penny Marshall, Tim Matheson, Toshiro Mifune, Warren Oates, Robert Stack and Treat Williams star in the film, which was directed by Steven Spielberg. Produced by Buzz Feitshans, with John Milius as Executive Producer, the screenplay is by Robert Zemeckis & Bob Gale, and the story is by Robert Zemeckis & Bob Gale and John Milius.

# # #

### STACK RELIVES 'THE GREAT L.A. AIR RAID'

In February of 1942, 21-year old movie star Robert Stack and his mother stood at a window of their Los Angeles home watching "The Great Los Angeles Air Raid."

"We saw searchlights and flashes in the sky. There was something up

there they were shooting at. It was frightening and spectacular," Stack recalls.

Thirty-seven years later Stack was chosen by director Steven Spielberg to play General Joseph Stilwell, who was commander of the southern California defenses during the 14-hour L.A. blackout, the shelling of Santa Barbara by a Japanese submarine, and other bizarre events that inspired Spielberg's World War II comedy "1941."

Stack, born in Los Angeles, recalls the invasion panic that gripped the city: "A Japanese submarine fired 15 shells at a Santa Barbara oil field and the big blackout occurred two days later. There was absolute bloody hysteria. Californians really thought they were going to be invaded any minute. The papers ran headlines of an enemy plane crashing in the city. People were selling Malibu beachfront homes for nothing."

For his role as Stilwell, Stack attempts to preserve order but doesn't have much success in the midst of Spielberg's ensemble of paranoid and passionate crazies. The characters include John Belushi as a gung-ho pilot, Dan Aykroyd as a patriotic tank sergeant, Tim Matheson as Stilwell's fun-loving aide, Treat Williams as a trouble-making corporal, Warren Oates as a battle-happy colonel, and Ned Beatty and Lorraine Gary as average citizens dragged into the war effort. Toshiro Mifune commands the menacing Japanese submarine, aided by Christopher Lee as a meddlesome German officer.

Stack worked on location at Long Beach Airport and at the ornate Los Angeles Theatre, one of the many movie houses that actually doused its marquee lights during the great blackout. The film telescopes the actual events of the period into one action-packed day.

Stack did real military duty as a naval gunnery officer in World War II and saw movie action in "The Mortal Storm," "Fighter Squadron," "Sabre Jet," and "Is Paris Burning?" In the classic comedy "To Be Or Not To Be" he played a Polish fighter pilot serving in the RAF.

Stack was filming "Eagle Squadron" when the Pearl Harbor invasion and "The Great Los Angeles Air Raid" occurred.

To play his starring role in "1941," Stack was aged 20 years by makeup. He did extensive research into Stilwell's life and the military history of the period in L.A.

"People really believed that the Japanese fleet was going to attack California," he observes. "And you know, I think they might have been able to do it."

A Steven Spielberg Film, "1941" is A Universal Pictures and Columbia Pictures presentation of An A-Team Production. Dan Aykroyd, Ned Beatty, John Belushi, Lorraine Gary, Murray Hamilton, Christopher Lee, Penny Marshall, Tim Matheson, Toshiro Mifune, Warren Oates, Robert Stack and Treat Williams star in the film, which was directed by Steven Spielberg. Produced by Buzz Feitshans, with John Milius as Executive Producer, the screenplay is by Robert Zemeckis & Bob Gale, and the story is by Robert Zemeckis & Bob Gale and John Milius.

# # #

### NO DISHPAN HANDS FOR STAR LORRAINE GARY

"I was never quite a full-fledged housewife. I cooked and cleaned but I hated it."

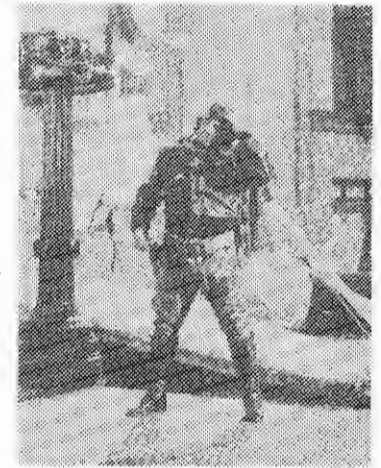
Movie star Lorraine Gary is obviously not the type for dishpan hands. On the screen, however, the talented actress makes a very convincing housewife.

She was Roy Scheider's wife in





Sgt. Tree (DAN AYKROYD) is a hyper-patriotic motor pool mechanic who becomes the commander of an M3 Tank crew, in "1941," the comedy spectacle opening.....at the .....Theatre.

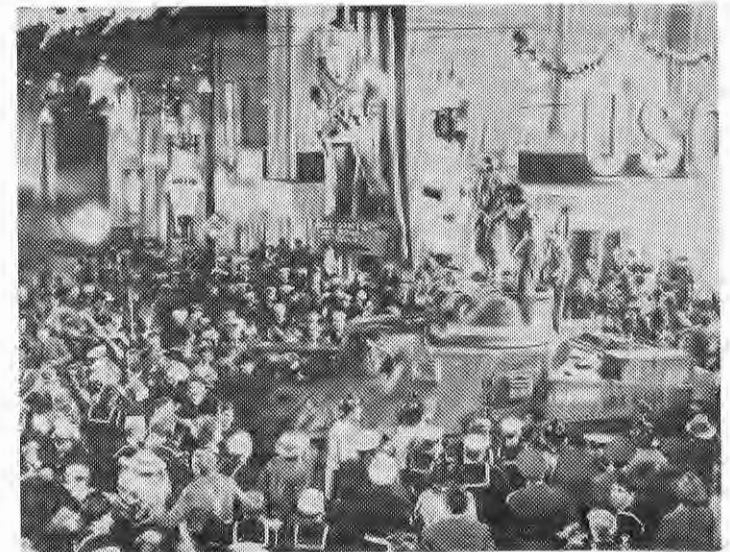


Six days after Pearl Harbor, gung-ho American pilot "Wild Bill" Kelso (JOHN BELUSHI) gets involved in some wild happenings on Hollywood Blvd., in "1941," the comedy spectacle opening .....at the .....Theatre.

PHOTOS PRESENTED  
HERE ARE IN  
85 LINE SCREEN  
FOR DIRECT SHOOTING BY  
THOSE PUBLICATIONS  
PRINTED IN OFFSET  
OR LITHO



(L-R): Sgt. Tree (DAN AYKROYD) and "Wild Bill" Kelso (JOHN BELUSHI) are two gung-ho Americans afflicted with severe war nerve jitters in the days following the attack on Pearl Harbor, in the comedy spectacle "1941," opening..... at the.....Theatre.



Six days after the attack on Pearl Harbor, a severe case of war jitters breaks out in Southern California leading to wild happenings on Hollywood Blvd., in "1941," the comedy spectacle opening.....at the.....Theatre.



ATTENTION EXHIBITOR:  
NEW ADDRESS AND  
PHONE NUMBER →

**FREE RADIO SPOTS**

**1941**

ORDER BLANK  
NORWICH AUDIO  
P.O. BOX 2161, North Hollywood, Ca. 91602 (213) 980-2615

PLEASE SEND ME \_\_\_\_\_ DATE

\_\_\_\_\_ SETS OF RADIO SPOTS

THEATRE \_\_\_\_\_ PLAYDATE

STREET ADDRESS OR P.O. BOX

CITY \_\_\_\_\_ STATE \_\_\_\_\_ ZIP CODE

SIGNATURE: \_\_\_\_\_

**FREE TELEVISION  
COMMERCIALS *In Color***

**1941**

ORDER BLANK  
Cooperative Advertising Department • Universal City Studios  
100 Universal City Plaza, Universal City, Ca. 91608 (213) 985-4321

PLEASE SEND ME \_\_\_\_\_ DATE

\_\_\_\_\_ SETS OF TV COMMERCIALS

THEATRE \_\_\_\_\_ PLAYDATE

STREET ADDRESS OR P.O. BOX

CITY \_\_\_\_\_ STATE \_\_\_\_\_ ZIP CODE

SIGNATURE: \_\_\_\_\_



## **PUBLICITY & PROMOTION**

on the picture, contact the  
Universal fieldman in your area, listed below:

**New York** (East Coast)

Christine LaMonte  
Universal Pictures  
445 Park Avenue  
New York, N.Y. 10022

**Atlanta** (South)

Michael Parver  
Michael Parver & Associates  
1819 Peachtree Road  
Suite 604  
Atlanta, GA 30309

**Chicago** (Mid West)

Paula Jamrock  
John Iltis Associates  
233 East Erie  
Chicago, Ill. 60611

**Los Angeles** (West Coast)

Nancy Weenick  
Universal Studios  
Press Department  
100 Universal City Plaza  
Universal City, Calif. 91608

**San Francisco** (North West)

Bob Goodwin  
Jack Wodell Associates  
Holbart Building Tower  
Market at Montgomery  
San Francisco, Calif. 94104

**Dallas** (South West)

Bill Burton  
Universal Film Exchange  
810 St. Paul St  
Dallas, Tex. 75201